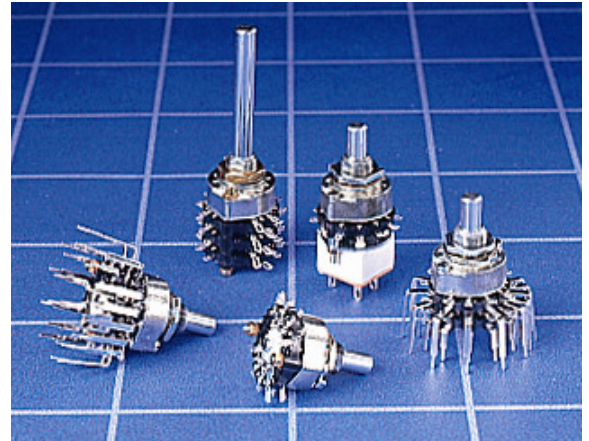


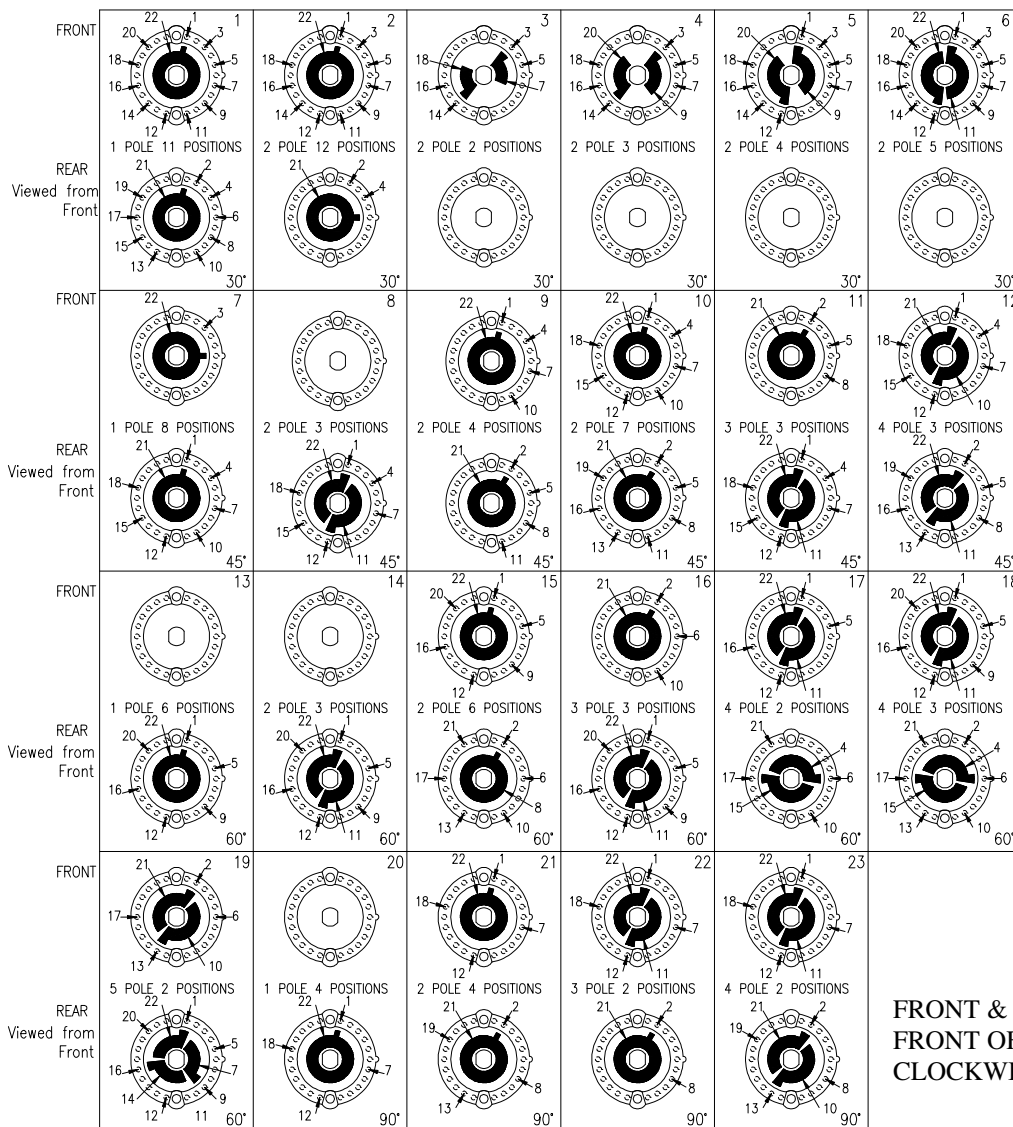
GENERAL ELECTRICAL & MECHANICAL SPECIFICATION

Switch Rating:	150mA @ 250V ac/dc
(resistive load only)	350mA @ 110V ac/dc
	1A @ 12V ac/dc
Life:	>10,000 Cycles
Operating Temperature:	-30°C to +85 °C
Proof Voltage:	1,000Vac (Initial)
Insulation Resistance:	>999 MΩ at 500Vdc (Initial)
Contact Resistance:	<20 mΩ (Initial)
Operating Torque (nominal):	7.2 cNm
End Stop Torque (nominal):	1.2 Nm
Wafer:	Polyphenylene Sulphide (PPS)
Housing:	Zinc Alloy Bright Zinc Plated
Contact/Terminal Material:	Brass CZ108 Ag Plated
Spindle:	Mild Steel Zn Plated and Passivated



TYPICAL WAFER LAYOUTS 30° 45° 60° 90°

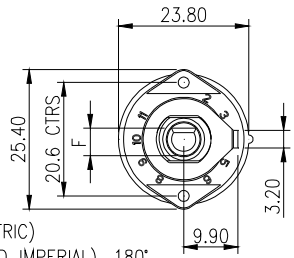
GENERAL FEATURES



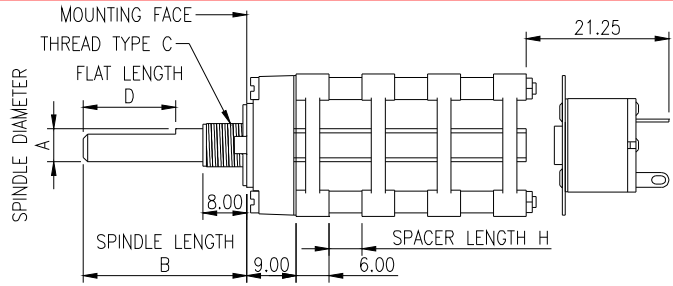
- Made in UK
- 25.4mm diameter multi-wafer rotary switch
- Standard 30° Indexing.
- Solder or Printed Circuit Board.
- Shorting (MBB) or non shorting (BBM) contacts.
- Adjustable stop to restrict number of positions
- Standard self-stacking wafers
- P.C. Terminals pitch circle diameter versions
- Special options: 45°, 60° or 90° indexing, Gold Flashed or Gold Plated contacts, rotary mains switch, insulated drive shafts, spindles with special flats, slots or knurls.

FRONT & REAR WAFERS VIEWED FROM FRONT OF SWITCH IN EXTREME COUNTER CLOCKWISE POSITION

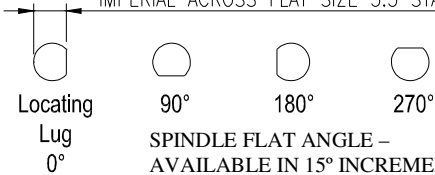
RA ROTARY SWITCH



LUG SHOWN AT 90° (STANDARD METRIC)
LUG ANGLES 0°, 90°, 135° (STANDARD IMPERIAL), 180° & 270° AVAILABLE

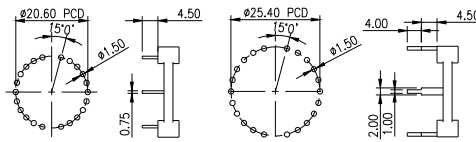
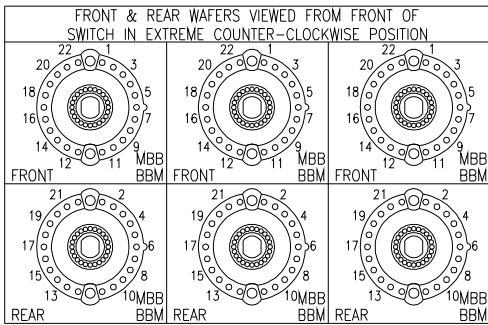


METRIC ACROSS FLAT SIZE 5.0 STANDARD
IMPERIAL ACROSS FLAT SIZE 5.5 STANDARD

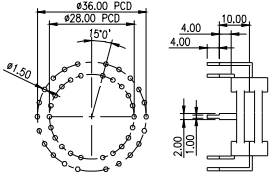


SPINDLE FLAT ANGLE – AVAILABLE IN 15° INCREMENTS

	A	B	C	D	E	F	G	HJKL
	Spindle Diameter	Spindle Length	Bush Thread	Spindle Flat Lgth	Spindle Angle	Spindle Flat	Locating Lug Angle	Spacer Length
IMPERIAL	6.35mm	50mm	9.52 x 32TPI			(5.5mm)		
METRIC	6.0mm	50mm	M10 x 0.75			(5.0mm)		



EXTENDED PC CLIPS FOR MULTI-BANK SWITCH



PRINTED CIRCUIT PINS STANDARD PRINTED CIRCUIT CLIPS

ORDERING CODE

Please Note: Standard Spindles are unflattened x 50mm FMF. Preferred Non-Standard Spindles (unflattened) are 14mm, 16mm, 18mm, 20mm, 22mm and 24mm from the mounting face (FMF). These lengths include the length of the 8mm long bush

CODE	TERMINAL
S	Solder Clips
P	20.5mmØ
A	25.4mmØ
B	28.0mmØ
C	36.0mmØ

CODE	CONTACT PLATING
S	Silver (2µ)
G	Gold Plate (Au 2.5 µ, Ni 2 µ)
F	Gold Flash (0.2 µ)

CODE	SPINDLE/ BUSH
M	6mmØ M10 x 0.75
I	6.35mmØ 9.52 x 32TPI



CODE	No. of Wafers
01	1 wafer
02	2 wafer
03	3 wafer
04	4 wafer
05	5 wafer
06	6 wafer
07	7 wafer
08	8 wafer
09	9 wafer
10	10 wafer

CODE	INDEX ANGLE & No of POLES
A	30° 1 Pole
B	30° 2
C	30° 3
D	30° 4
E	30° 5
F	30° 6
G	45° 1
H	45° 2
K	45° 3

CODE	INDEX ANGLE & No of POLES
L	45° 4 Pole
M	60° 1
N	60° 2
P	60° 3
R	60° 4
S	60° 5
T	90° 1
W	90° 2
X	90° 3
Y	90° 4

CODE	MAXIMUM No. of POSITIONS
01	1
02	2
03	3
04	4
05	5
06	6
07	7
08	8
09	9
10	10
11	11
12	12
00	No Stop

CODE	CIRCUITRY
B	BBM
M	MBB

CODE	Spindle Length from Mounting face (including bush length)
A	14mm No Flat
B	16 No Flat
C	18 No Flat
D	20 No Flat
E	22 No Flat
F	24 No Flat
G	50 0°/42mm
H	50 90°/42mm
K	50 180°/42mm
L	50 270°/42mm
S	50 No Flat

CODE	SPECIAL OPTIONS Mains Switch
O	None
N	OFF/ON Mains switch

CODE	WAFER SPACING
X	Self Stacked
H	3mm
J	6mm
K	8mm
L	10mm