

# LS LOCK SWITCHES

# RoHS COMPLIANT

## LS300 GENERAL ELECTRICAL & MECHANICAL SPECIFICATION

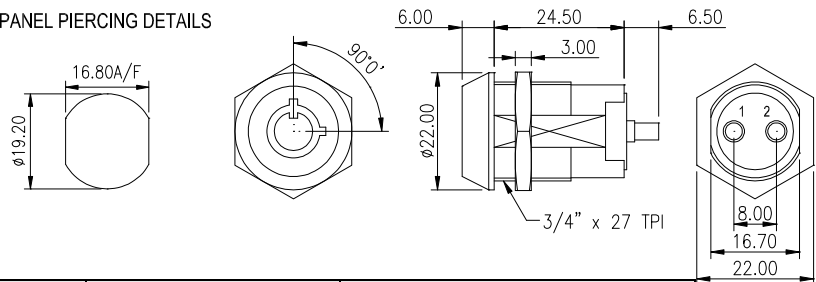
Switch Rating	2A @ 250Vac
(Not mains isolating):	4A @ 125Vac
Life:	>10,000 Cycles
Proof Voltage:	1,500Vac (Initial)
Insulation Resistance:	>999MΩ at 500Vdc(Initial)
Contact Resistance:	<10 mΩ (Initial)



## GENERAL FEATURES

- Tapered lock head
- Single pole, single throw lock switch, 90° indexing.
- Chrome plated zinc alloy die cast housing
- Key insertion/removal in both positions
- Radial cylinder with 7 pin tumblers.
- 50,000 key differs range.

PANEL PIERCING DETAILS



ORDERING CODE	TERMINALS	KEY FREE	KEY TRAVEL	CONTACT POSITION
LS300	2	2	90°	

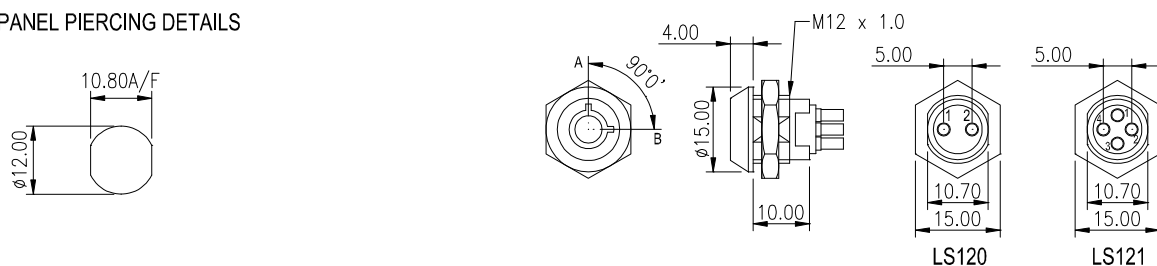
## LS120, LS120B & LS121 GENERAL ELECTRICAL & MECHANICAL SPECIFICATION

## GENERAL FEATURES

Contact Rating (Not mains isolating):	1A @ 250V AC 2A @ 125V AC
Life:	>10,000 Cycles
Proof Voltage:	>1000V AC – I minute (Initial)
Insulation Resistance:	>500 Megohms at 500V DC (Initial)
Contact Resistance:	10 Milliohms (max) (Initial)

- LS120 Single Pole
- Tapered lock head, 90° Indexing.
- Radial cylinder with 7 pin tumblers.
- Chrome plated zinc alloy die cast housing
- 2 Keys per lock (common keys only)
- Keys can be withdrawn at both ON and OFF positions.
- LS121 double pole, single throw lock switch.

PANEL PIERCING DETAILS



ORDERING CODE	TERMINALS	KEY FREE	KEY TRAVEL	CONTACT POSITION
LS120A	2	2	90°	
LS120B	2	2	90°	
LS121	4	2	90°	